

# Scrutiny Committee

## Troubled Families Update

20<sup>th</sup> September 2012

**Top 100 Families**

**Nationally...**

October 2011; DCLG announced intention to transform the lives of 120,000 families through national **TF programme**

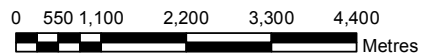
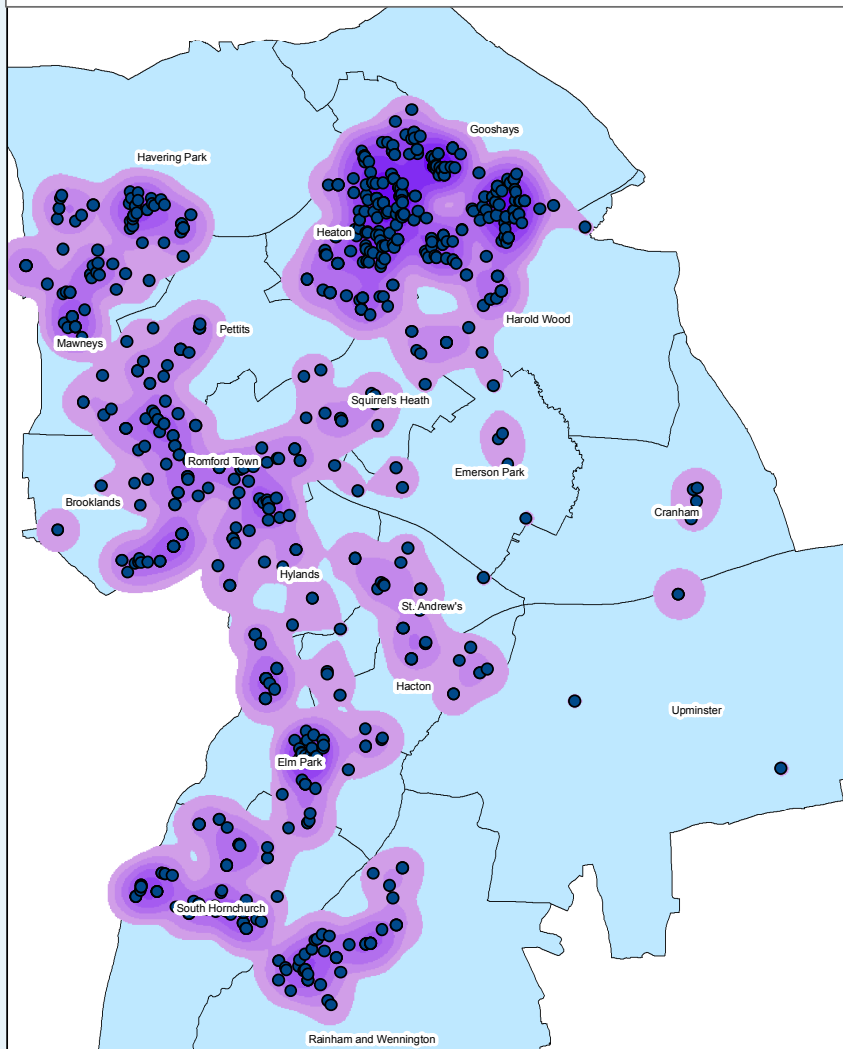


**HAVERING'S TROUBLED FAMILIES PROGRAMME**

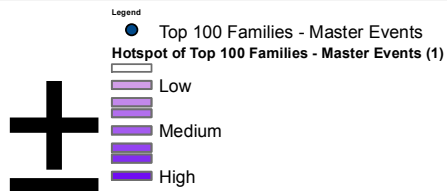
Merging the local and national projects



## Top 100 families plotted

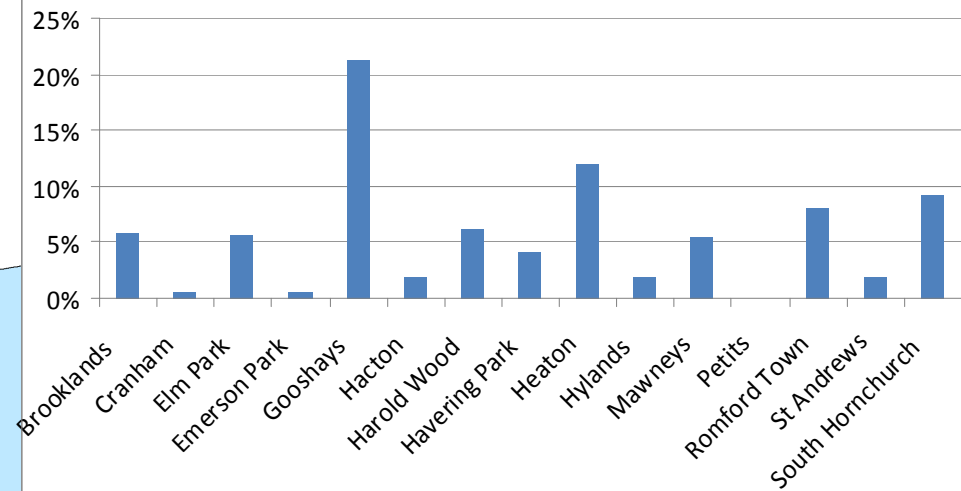


Based upon the Ordnance Survey mapping with the permission of the Controller of Her Majesty's Stationery Office (c) Crown copyright. Unauthorised reproduction infringes Crown Copyright and may lead to prosecution or civil proceedings. London Borough of Havering LA100024327



## Findings from Matrix

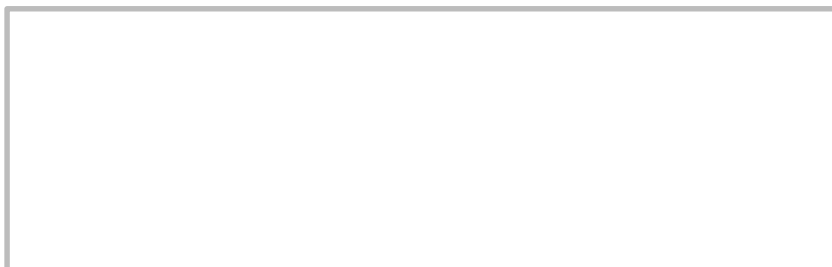
### Resident Ward



# THE GOVERNMENT'S CRITERIA

The identifying criteria...

The result that triggers payment...



In the last three consecutive school terms **all children** have:  
 a) < 3 fixed term exclusions AND  
 b) < 15% unauthorised absence

Any child not on the school roll previously has moved into school, PRU or alternative provision AND meets the criteria above

Crime & ASB

Households with 1 or more under 18 year old with a proven offence in the last year

AND/OR

Households where any member has 1 or more ASB order, injunction or contract, or the family has been subject to a housing-related ASB intervention in the last year

A reduction of at least 1/3 in proven offences by all under 18 year olds in the last 6 months (compared to the average from the previous 6 months)

A 60% reduction in reported ASB incidents (or breaches of ASB intervention) over 6 months.

Work

If a family meets the 'Education' and 'Crime & ASB' criteria we can then check if any adult in the family is on DWP out of work benefits

*If a family meets all 3 criteria, they must be included on our list.*

An adult in the household volunteers for the Work Programme or ESF Provision

OR

For families not on ESF /Work Programme, an adult formerly on out of work benefits enters continuous employment (for 26 weeks if previously on JSA or 13 weeks for other benefits) [This is an alternative to meeting the other criteria]

Local Discretion

If a family meets less than three of the criteria above we can use local discretion to add them to our list. DCLG advise that we could consider children on CP plans, families with frequent police call-outs or arrests or health problems.

*There are no PBR criteria relating to the local discretion factor.*

The Local Discretion criteria for Havering have been determined through the 'Top 100 Families' identification process. Our priorities locally are domestic violence, mental health, substance/alcohol misuse and housing issues.

Per Family	Upfront funding		Results based payment available		
	Year	%	£	%	£
	1	80	3,200	20	800
	2	60	2,400	40	1,600
	3	40	1,600	60	2,400

## 9 Work Strands

PILOTS

ESF PROGRAMME

OUTCOME & EVALUATION  
FRAMEWORK

REINVESTMENT STRATEGY

WHOLE SYSTEM  
REDESIGN

COMMISSIONING

PARTICIPATION

WORKFORCE  
DEVELOPMENT

COMMUNICATIONS PLAN

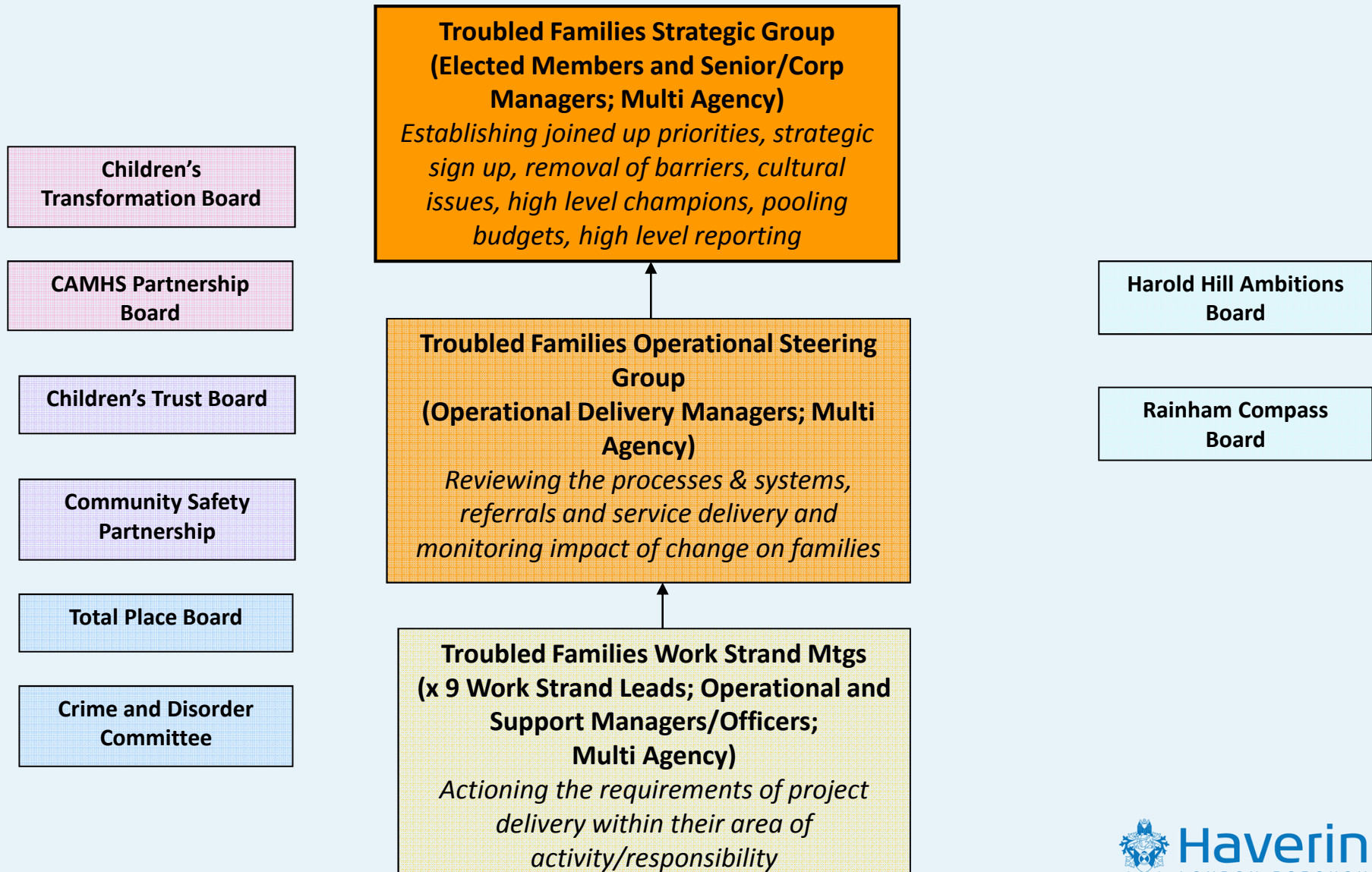
## Benefits

- Aligning work programmes within Council
- Focus on priority families issues
- Impetus and capacity to get 'own house in order'
- Systemic and sustainable change; Legacy

## Challenges;

- ESF Programme
- PbR Criteria
- Partnership buy in and momentum

# Governance





## What next?

- TF partnership conference/workshop
- Develop detail in works strands and identify leads
- Confirm intervention for Year 1 cohort of families
- Governance structure and operational group